A black cow and her calf are the central focus of the image. The cow is on the left, and the calf is on the right, looking towards the camera. They are in a green, grassy field under a blue sky with some clouds. In the background, another cow is visible, lying down.

# REPROSCAN **PREG** **TESTING** UNITS

LOW  
STRESS  
**CATTLE**  
**SOLUTIONS**



**Catagra Group**  
Innovation in Agriculture





**Catagra Group**  
Innovation in Agriculture



# REPROSCAN LOW STRESS CATTLE SOLUTIONS

The **Catagra Group** was formed as a response to the Beef and Dairy industries need to overcome the ongoing problems concerning the astounding number of cattle being preg tested as “empty” due to early pregnancies not being detected; embryonic loss and the overall mis-diagnosis by manual palpation. These numerous mis-diagnoses are costing these industries millions of dollars on an annual basis. **Catagra Group** helps resolve this problem.

The **Catagra Group** is focused on improving industry standards with the use of **ReproScans** innovative technology and to provide comprehensive trainings in an easy to understand manner. **ReproScans technology** allows operators to accurately diagnose early pregnancies; accurate ageing of pregnancies and even determining the sex of the calf - if required.

Early identification of non-performers allows for better marketing opportunities; improved herd management and most importantly, improved financial performance!

**MAXIMISE PRODUCTION BY  
IDENTIFYING NON-PERFORMERS**

**MINIMISE UNNECESSARY  
FEED COSTS**

**LOW STRESS AND NON-INVASIVE**

**EASY TO LEARN & USE**

**DEMONSTRATIONS AND TRAINING  
AVAILABLE.**



**ReproScan**  
Ultrasound Technology

**IAP INNOVATION AWARD  
AWARDED AT BEEFEX**



**Catagra Group**  
Innovation in Agriculture

# BENEFITS OF REPROSCAN PREG TESTING

## EARLY PREGNANCY DIAGNOSIS

Pregnancy diagnosis can be determined as early as 4-weeks after joining when using **ReproScan** Technology.

The earlier Pregnancy Testing is performed the more valuable the information and the sooner important management decisions can be made. Non-performing cows can then be separated to provide better marketing opportunities to maximise cashflow. Feed is best allocated to the highest returning animals which in most cases are in-calf Breeders.

## FETAL SEXING THE PREGNANCY

The sex of the fetus can be determined by a skilled operator from day 60 of gestation and up to about 110 days. This information can be valuable to Seed Stock Producers or when selling surplus females. Guaranteeing the sex status of the unborn calf could at times add significant \$ value.



## AGEING THE PREGNANCIES

Ageing to determine the stage of pregnancy using the **ReproScan** Technology is a simple and easy process. This can enable more efficient herd management and can significantly reduce feed costs.

## INTENSIVE COMMERCIAL OR STUD BREEDING OPERATIONS

With controlled joining pregnancies can be aged and recorded as to how many weeks in-calf.

## FIXED TIME AI OR EMBRYO PROGRAMMES

Pregnancies to Fixed-time AI programmes can be identified from pregnancies by back-up bulls used 7-10 days later.

## NORTHERN EXTENSIVE BREEDER OPERATIONS

Ageing the pregnancy allows for segregated preg-testing. Breeders can be grouped into trimesters or months enabling better feed and weaning management.

## FEEDLOT HEIFERS

Heifers can be easily preg-tested upon induction. Heifers with pregnancies over 4-months are generally rejected prior to being placed on expensive 60-day feed programmes.

## INTENSIVE DAIRY HERD MANAGEMENT

Pregnancy status can be confirmed 30-days after joining. Empty cows are identified for treatment or re-joining. Joining dates are confirmed within 5-days which provides accurate information to determine drying-off dates and maximising milk production.

## NOTES REGARDING AGEING

Accurate ageing of pregnancies is best done prior to 4 months of gestation. Attempting to determine pregnancy "age" status of 6 to 8-month pregnancies can vary significantly due to variation in lengths of gestation, genetics, cross breeding, sex of calf and often a 20kg variance in calf birth-weights.



# ADDITIONAL BENEFITS

## PREG TESTING

### Main Objective

The key to profitability for all breeding enterprises is high reproductive efficiency

### The Benefits of REPROSCAN

- Provides convenience to Preg Test paddock-by-paddock to suit your mustering program
- Earlier preg testing provides greater financial returns
- Maximises production and minimises unnecessary feed costs
- Increases processing time efficiency
- Non-invasive with less stress on the heifer/cow
- Minimal operator fatigue
- Reduces shoulder injuries and elbow hyperextension injuries
- Staff training available
- Easy to use and learn



### FINANCIAL BENEFITS OF IDENTIFYING EMPTY COWS EARLY

- Provides better marketing opportunities for empty and out-of-season breeders
- Improves Cash Flow
- Reduces unnecessary feed and lick costs
- Provides management flexibility



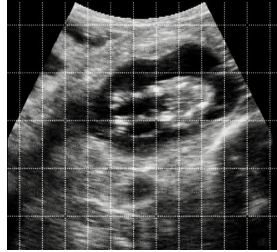
TALK TO US ABOUT  
AVAILABLE  
**FINANCING AND  
LEASING** OPTIONS



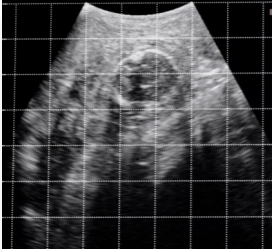
# THE BENEFITS OF REPROSCAN ULTRASOUND VS MANUAL PALPATION



**Earlier  
Pregnancy  
Diagnosis**



**Increased  
Accuracy &  
Non-invasive**



**Avoids  
Embryonic  
Loss**



**Easier  
to  
Learn**



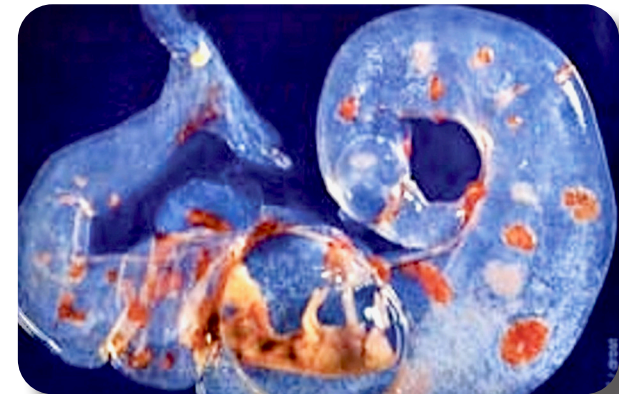
**Reduced  
Operator  
Fatigue**



**Cows  
Processed  
Faster**

## EARLY IDENTIFICATION OF INFERTILITY

- Ultrasound assists in identifying abnormalities, ranging from uterine infections to cystic ovaries, to the occasional freemartin heifer and infertility
- Low pregnancy rates may indicate problems with an individual bull
- Possible indication of an infectious disease or inadequate nutrition prior to joining
- Diseases and management problems affecting the whole herd can be identified much earlier.





# SUMMARY

## Question:

Is a breeding cow really a breeder if she is not in calf?

Non-pregnant cows are unproductive and should be removed from the herd. Pregnancy testing using ultrasound 4–6 weeks after the end of joining is an inexpensive and convenient method of identifying non-pregnant cows at an early stage.

Pregnancy testing can also identify herd fertility problems, enabling earlier investigation and action than would otherwise be possible.





# PREG TEST TRAINING WITH REPROSCAN CATTLE ULTRASOUND

Since 2008, **ReproScan** personnel have offered hundreds of ultrasound training programs on six continents. **Catagra Group** know that reproductive performance is key to maximising breeder herd profitability.

The **Catagra** team is very committed to providing ultrasound preg testing training. Accurate pregnancy diagnosis is crucial to your Preg Testing Programme.

**ReproScan** Courses are very comprehensive and hands on. **Catagra Group** trainers share their experience from preg testing hundreds of thousands of cows using ultrasound. The emphasis during training is placed upon accuracy and technique followed by practice. This then becomes a quick and easy technique to preg-test cows.

The **ReproScan** training material provided with every training, includes videos displaying images of empty breeding tracts and various stages of pregnancy. This becomes valuable reference material, and when reviewed several times, develops your eye to accurately age the pregnancy.

"IT IS SO GOOD TO SEE THIS SORT OF TECHNOLOGY COMING INTO THE AUSTRALIAN CATTLE INDUSTRY. WE MET SOME MEMORABLE PEOPLE AT THE **REPROSCAN** COURSE AND ENJOYED IT SO MUCH WE TALKED ABOUT IT ALL THE WAY HOME. THANK YOU TO THE **CATAGRA GROUP** TRAINERS AND THE GREAT GROUP FOR THE LAST 2-DAYS".

URBAN DROUGHTMASTERS

## CATAGRA GROUP TRAINING COURSE AGENDA

- Basics of Cattle Ultrasound
- Anatomy - The Reproductive Tract
- Early Pregnancy Diagnosis
- Advanced Pregnancy Diagnosis
- Examining the Empty Uterus
- Ageing Pregnancies
- Unusual Images
- Twins
- Care of the Ultrasound Equipment
- Tips to Ultrasound Cattle
- Safety Concerns
- Biosecurity

ON PROPERTY AND 2 DAY GROUP TRAINING COURSES AVAILABLE, ALONG WITH OUR ONLINE INTRODUCTORY COURSE.

**POSITIONS ARE LIMITED.** FOR FURTHER INFORMATION OR FOR REGISTRATION PLEASE CONTACT THE **CATAGRA GROUP** ON PH 1300 795 607 OR EMAIL [INQUIRY@CATAGRA.COM](mailto:INQUIRY@CATAGRA.COM)



**ReproScan**  
Ultrasound Technology



# TRAINING WITH REPROSCAN CATTLE ULTRASOUND

ACCURATE PREGNANCY DIAGNOSIS IS  
CRUCIAL TO YOUR PREG TESTING PROGRAM

THE EMPHASIS DURING TRAINING IS PLACED  
UPON **ACCURACY AND TECHNIQUE**  
FOLLOWED BY **PRACTICE**.



**Tracey-Anne Conroy** ★ recommends **Catagra Group**.

June 4, 2020 · 🌐

...

Attended a two day course demonstration on how to use the **ReproScan**, run by the **Catagra Group** at Nukinenda Station. Course was excellent, very thorough and was very hands on! After completing the course, I am totally confident and comfortable on determining the difference between an empty cow and a pregnant cow, as well as determining the stage of pregnancy. Can't wait to start pregnancy testing next Monday!



# BOVISCAN CURVE PACKAGE

## PACKAGE INCLUDES

- BOVISCAN CURVE UNIT
- A CHOICE OF ONE OF 3 REPRO ARMS
- HEAVY DUTY IMPACT CASE
- XENARC 8" LCD MONITOR WITH VISOR HOOD SHADE CASE, OR OJO GOGGLES, OR 21" FEEDLOT MONITOR MOUNTED IN SPLASH PROOF CASE

## ADDITIONAL OPTIONAL EXTRAS

- REPRO ARMS
- XENARC MONITORS WITH SWIVEL RAM MOUNT CLAMP
- OJO GOGGLES
- 21" FEEDLOT MONITOR MOUNTED IN SPLASH PROOF CASE



## BOVISCAN CURVE UNIT

BovisCan Curve is a portable, light weight cattle ultrasound unit designed for extension arm ultrasound with the ReproArm. This rugged dust and splash-proof scanner is ideal for the cattle yards or dairy.

## FEATURES OF THE BOVISCAN CURVE

### UNIT

- 2 kg (4.4 lb) weight – including battery
- Splash proof
- Comfortable Waist strap & Protective Gel Sleeve

### PROBE

- 4.0 MHz 60 mm convex rectal probe
- 80 element ruggedized probe

### BATTERY

- 8 hour lithium ion built - in battery
- Charge from 120/240V AC or 12 DC (Car Charger)
- Can be used while charging
- Battery indicator on display

### DISPLAY

- 4 preset examinations
- Rapid Zoom 6 cm to 22 cm with indicator
- Multiple grid setting for measuring and ageing fetus

### DISPLAY CONNECTIONS

- VGA 5 VDC Video Out port – with strong LEMO type connector
- NTSC/PAL Video Out port – with standard RCA connector

### ACCESSORIES (SOME OPTIONAL EXTRAS)

- OJO Goggles and/or...
- Direct wired Bright LCD monitor
- 21" Feedlot Monitor Mounted in Splash Proof Case
- Choice of 3 sizes of ReproArms

### 2 YEAR WARRANTY



# REPROSCAN XTC PACKAGE

## PACKAGE INCLUDES

REPROSCAN XTC UNIT

- A CHOICE OF ONE OF 3 REPRO ARMS
- HEAVY DUTY IMPACT CASE
- XENARC 8" LCD MONITOR WITH VISOR HOOD SHADE CASE, OR OJO GOGGLES, OR 21" FEEDLOT MONITOR MOUNTED IN SPLASH PROOF CASE

## ADDITIONAL OPTIONAL EXTRAS

- REPRO ARMS
- XENARC MONITORS WITH SWIVEL RAM MOUNT CLAMP
- OJO GOGGLES
- 21" FEEDLOT MONITOR MOUNTED IN SPLASH PROOF CASE



## REPROSCAN XTC UNIT

ReproScan XTC is a unique portable, light weight cattle ultrasound unit designed for extension arm ultrasound using the ReproArm or for arm-in specialised early reproductive examinations.

## FEATURES OF THE REPROSCAN XTC

### UNIT

- 1.5 kg (3.3 lb) weight - including battery
- Splash proof
- Waist pack or backpack

### PROBE

- 4.0 MHz 60 mm convex rectal probe
- 80 element ruggedized probe

### BATTERY

- 6 hour lithium ion interchangeable battery
- Charge from 120/240V AC or 12 DC (Car Charger)
- Can be used while charging
- Battery indicator on display

### DISPLAY

- 8 preset examinations
- Rapid Zoom 6 cm to 22 cm with indicator
- Multiple grid setting for measuring and ageing fetus

### DISPLAY CONNECTIONS

- VGA 5 VDC Video Out port - with strong LEMO type connector
- NTSC/PAL Video Out port - strong BNC connector

### ACCESSORIES (SOME OPTIONAL EXTRAS)

- OJO Goggles and/or ...
- Wireless or direct wired **Bright LCD monitor**
- 21" Feedlot Monitor Mounted in Splash Proof Case
- Choice of 3 sizes of **ReproArms**

### WIRELESS & IMAGE CAPABILITIES

- 2.4 GHz **Wireless sender** with sender on/off capabilities
- **Freeze button**
- Image capture & 250 image storage

### 2 YEAR WARRANTY



# REPROSCAN FLEXX PACKAGE

## PACKAGE INCLUDES

REPROSCAN FLEXX UNIT

- A CHOICE OF ONE OF 5 PROBES
- HEAVY DUTY IMPACT CASE

## ADDITIONAL OPTIONAL EXTRAS

- REPRO ARMS
- PROBES
- XENARC MONITOR WITH SWIVEL RAM  
VISOR HOOD CASE & MOUNT CLAMP
- OJO GOGGLES
- 21" FEEDLOT MONITOR  
MOUNTED IN SPLASH  
PROOF CASE



## REPROSCAN FLEXX UNIT

ReproScan FLEXX is a unique portable, light weight mixed practice ultrasound unit designed for both extension arm ultrasound using the ReproArm &/or for arm-in specialised early reproductive examinations along with external applications for other species.

## FEATURES OF THE REPROSCAN FLEXX

### UNIT

- 1.5 kg (3.3 lb) weight - including battery
- Splash proof
- Waist pack or backpack

### PROBE

- 4.0 MHz 60 mm convex rectal probe
- 80 element ruggedized probe

### BATTERY

- 6 hour lithium ion interchangeable battery
- Charge from 120/240 VAC or 12 DC (Car Charger)
- Can be used while charging
- Battery indicator on display

### DISPLAY

- 8 preset examinations
- Rapid Zoom 6 cm to 22 cm with indicator
- Multiple grid setting for measuring and ageing fetus

### DISPLAY CONNECTIONS

- VGA 5 VDC Video Out port - with strong LEMO type connector
- NTSC/PAL Video Out port - strong **BNC connector**

### ACCESSORIES (SOME OPTIONAL EXTRAS)

- OJO Goggles and/or
- Direct wired **Bright LCD monitor**
- 21" Feedlot Monitor Mounted in Splash Proof Case
- Choice of 3 sizes of **ReproArms**

### WIRELESS & IMAGE CAPABILITIES

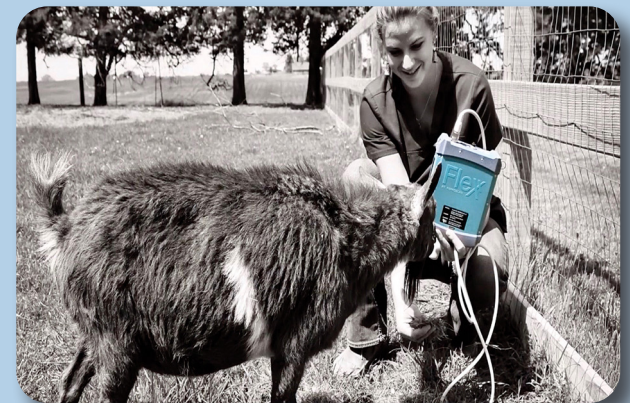
- 2.4 GHz **Wireless sender** with sender on/off capabilities
- **Freeze button**
- Image capture & 250 image storage

### 2 YEAR WARRANTY



# REPROSCAN FLEXX

DESIGNED FOR MULTIPLE SPECIES



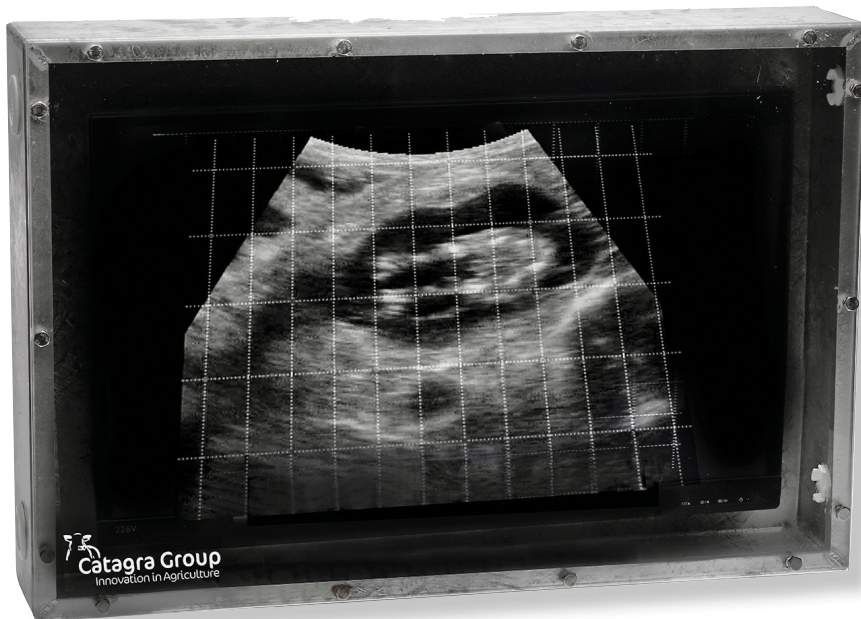


## ACCESSORIES

SOME ACCESSORIES  
ARE INCLUDED AND ARE  
ALSO AVAILABLE AS  
ADDITIONAL OPTIONS

### 21" FEEDLOT MONITOR MOUNTED IN SPLASH PROOF CASE

21" Monitor mounted in aluminium case  
with Perspex Screen. Powered by 240V



### 8" MONITOR XENARC TECHNOLOGIES INDUSTRIAL GRADE SUNLIGHT READABLE

With Swivel Ram  
Mount Clamp



#### FEATURES OF THE 8" MONITOR

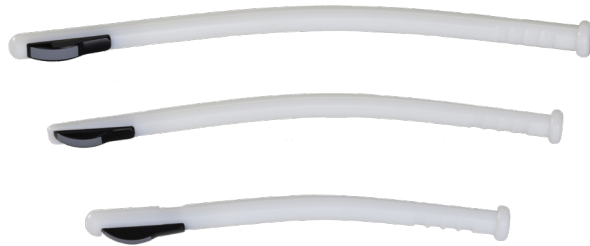
- Heavy Duty aluminum casing
- 5 Wire Resistive Armored Touchscreen option
- VGA, HDMI, DVI, and AV Inputs, 4x3 Aspect Ratio
- Adjustable LED Backlight
- High Performance image and video processor
- Vertical and Horizontal image flip
- Front buttons disabling capability
- Chip Monolithic Ceramic Capacitors for improved durability
- AV2 Autoswitching upon signal detection
- VESA 75mm Standard
- 26 Pin heavy-duty connector with connector locking
- Brightness - 1 000 cd/m2 sunlight readable
- Anti-Reflective and Anti-Fingerprint Coating

This rugged and versatile product offers superior readability under direct sunlight. With our proprietary technology, we are able to increase the brightness rating to 1,000NIT, and the Contrast Ratio to 500:1. Sunlight readability is further enhanced by it's advanced Anti-Reflective coating. Our products handle extreme environments, wider temperature range and wider voltage input range because our focus is on offering our customers the best. By utilizing high grade components, this monitor is perfect for all cattle conditions.



## REPRO ARM

### 3 SIZE OPTIONS



Now offering three different styles of ReproArms for improved extension arm ultrasound pregnancy testing. Uniquely engineered, ReproArms are designed specifically for **ReproScan's** convex and linear probes. ReproArms not only allow for safer and more efficient pregnancy diagnosis, but also alleviate strain on the practitioner's shoulder and arm. The use and acceptance of extension arm technology in pregnancy testing continues to gain popularity. **ReproScan** is very proud of its part in reducing injuries caused by manual palpation and "arm in cow" ultrasound.

#### FEATURES OF THE REPRO ARMS

There are three different ReproArms available, each designed for a specific use:

##### 1. Regular Arm: 32" 81 cm

Used for most of the "behind the cow" scanning

##### 2. Shorty Arm: 23" 59 cm

Used for feedlot heifers

##### 3. Kiwi Arm: 27" 69 cm

Used for smaller dairy cows

- Makes extension arm ultrasounding easier to perform
- Probes insert in and out of the ReproArm quickly
- Protects the probe and probe cord
- Designed specifically with a curved shape to reach those deep down pregnancies

## OJO GOGGLES V4S

The OJO V4s offer a streamlined design allowing you more peripheral vision. A simple design with multiple mounting options to customise for your environment.

#### FEATURES OF THE OJO GOGGLES

- Comfortable, rugged, quality viewing device
- VGA 640 x 480 bright display
- Rugged LEMO connector
- Splashproof for the dairy environment
- Compatible with all ReproScan units
- Light weight and comfortable
- Multiple adjustments for a personalized fit. The image can be positioned for greatest viewing comfort
- Increased peripheral visibility for your safety
- 12 month warranty

#### OJO V4s Goggles with Head Mount

- Can also be worn with GoPro Mount or Cap Mount





## TESTIMONIALS



“INTRODUCING  
**REPROSCAN** TO  
OUR BUSINESS  
HAS LIFTED  
PRODUCTION  
AND PASTURE  
UTILIZATION BY  
IDENTIFYING THE  
REAL PERFORMERS  
IN OUR HERD”



The **ReproScan** has allowed us to move our preg testing program forward to 40 days from taking the bulls out of the breeder paddocks, The benefits are huge!



PETER & SUE GREY  
**THE RIVERS BRAHMANS**  
MARLBOROUGH, QUEENSLAND  
**UNIT IN USE: REPROSCAN  
XTC & 8" MONITOR.**

We can utilize our feed more productively. We have found there are less cows on the market at this time compared to the usual preg testing and culling months. This results in a better market for our culls. Fixed Time AI has also become a major tool for genetic improvement in our stud herd. The **ReproScan** plays a major role in these programs, identifying the empty females at a 40 day interval, enabling us to reprogram the empties. We have found the 40 day preg test to be the most successful retention of pregnancies in our FTAI programs. Earlier detection is possible, however the retention of pregnancies is lower.

The aftermarket service and advice from the **Catagra** team has been outstanding. The transition from manual preg testing to scanning is not difficult, and the process was made easier by knowing the **Catagra** team are on the end of the phone if needed, which is rare these days. We cannot recommend the **Catagra Group** highly enough for their professionalism, and prompt, happy, dedication to their products. Introducing **ReproScan** to our business has lifted production and pasture utilization by identifying the real performers in our herd. We highly recommend the **ReproScan** to anyone looking to increase production and efficiency.



These things are magic. I was very sceptical and I thought I could do it all with manual palpation.....now I would never go back!

**ReproScan** is so easy on the cows and easy on the operator. I can do more successive days in the yards without aches and pains creeping in. Picking up early pregnancies is critical to making management decisions regarding sales programs, especially up here in the North. We need to move with the times and embrace technology.

**“REPROSCAN**  
IS THE WAY OF  
THE FUTURE FOR  
BREEDER HERD  
MANAGEMENT**”**



JOHN (CURLEY) FIRMAN  
**NT CATTLE SCAN & SPAYING**  
KATHERINE, NORTHERN TERRITORY  
**UNIT IN USE: BOVISCAN & 8" MONITOR**





ROB AND SARAH COOK  
**CABBAGE TREE & BUCCA**  
 GIN GIN, QUEENSLAND  
 UNIT IN USE: XTC UNIT & 8" MONITOR



“EVERY INVESTMENT WE HAVE MADE IN OUR CATTLE BUSINESS HAS TO PAY FOR ITSELF. THE NUMBERS MUST STACK UP. OUR INVESTMENT IN THE **REPROSCAN** UNIT HAS LIFTED OUR BOTTOM LINE.”

My wife Sarah and I run a breeder and background operation in Central Queensland. The fertility of our Breeders is the key factor to our business.

If we haven't got the fertility right with high calving percentages in our breeders it effects every other stage of our business. Every investment we have made in our cattle business has to pay for itself. The numbers must stack up.

Our investment in the **ReproScan** unit has lifted our bottom line by allowing us to identify cows that should be in calf that are not and most importantly identify them from an early stage of pregnancy.

The **ReproScan** allows us to do this opposed to manual preg-testing when you are doing

this 2-3 months further down the track. This allows us to make decisions promptly. We can only manage what we can measure and our fertility has gone through the roof. After my accident and now in a wheelchair I had to look at other options and I had to turn these into opportunities. For Sarah to take on the role of preg-testing I had to find something user-friendly, safe and easy on the operator. We have been using the **ReproScan** for several years now and it has made an incredible difference to our operation.



“THE TRAINING PROVIDED BY THE **CATAGRA GROUP** FOLLOWING THE PURCHASE OF THE **REPROSCAN** UNIT HAS PROVIDED A VERY ACCURATE AND QUICK WAY TO DETERMINE THE HEIFER PREGNANCY STATUS.”



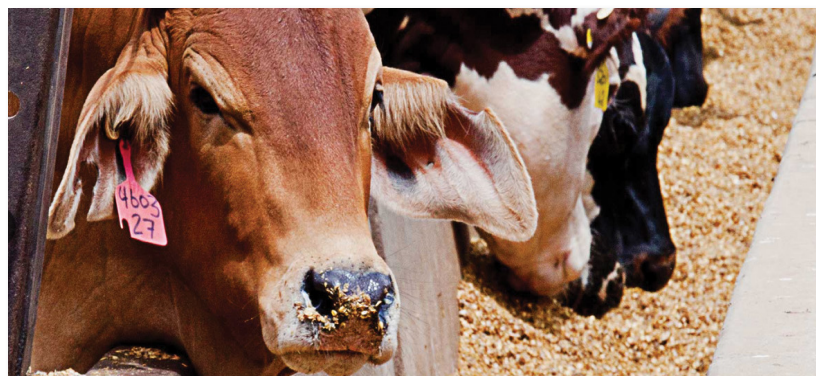
RYAN BROWN  
**SMITHFIELD CATTLE CO.**  
GOONDIWINDI & PROSTON,  
QUEENSLAND  
**UNIT USED: BOVISCAN AND 21”  
FEEDLOT MONITOR**



Aside from the obvious negative financial impact of having pregnant heifers in the feedlot, our greatest benefit to pregnancy testing has been the positive effect on the animals' welfare

The Smithfield Cattle Co. consists of 2 feedlots. Sapphire at Goondiwindi and Smithfield at Proston with a total capacity of 24,500 head plus backgrounding 4,000 - 5,000 head of domestic cattle which are predominately heifers.

Using the **ReproScan** unit we preg test these heifers upon their induction into the Feedlot where we regularly preg test up to 300 per week.







**FOR FURTHER INFORMATION**  
**CONTACT 1300 795 607**  
INQUIRY@CATAGRA.COM  
WWW.CATAGRA.COM  
UNIT 2/4 ACCESS CRESC., COOLUM  
QUEENSLAND, 4573

**IAP INNOVATION AWARD  
AWARDED AT BEEFEX**



**REPROSCAN** LOW STRESS  
**CATTLE SOLUTIONS**

